

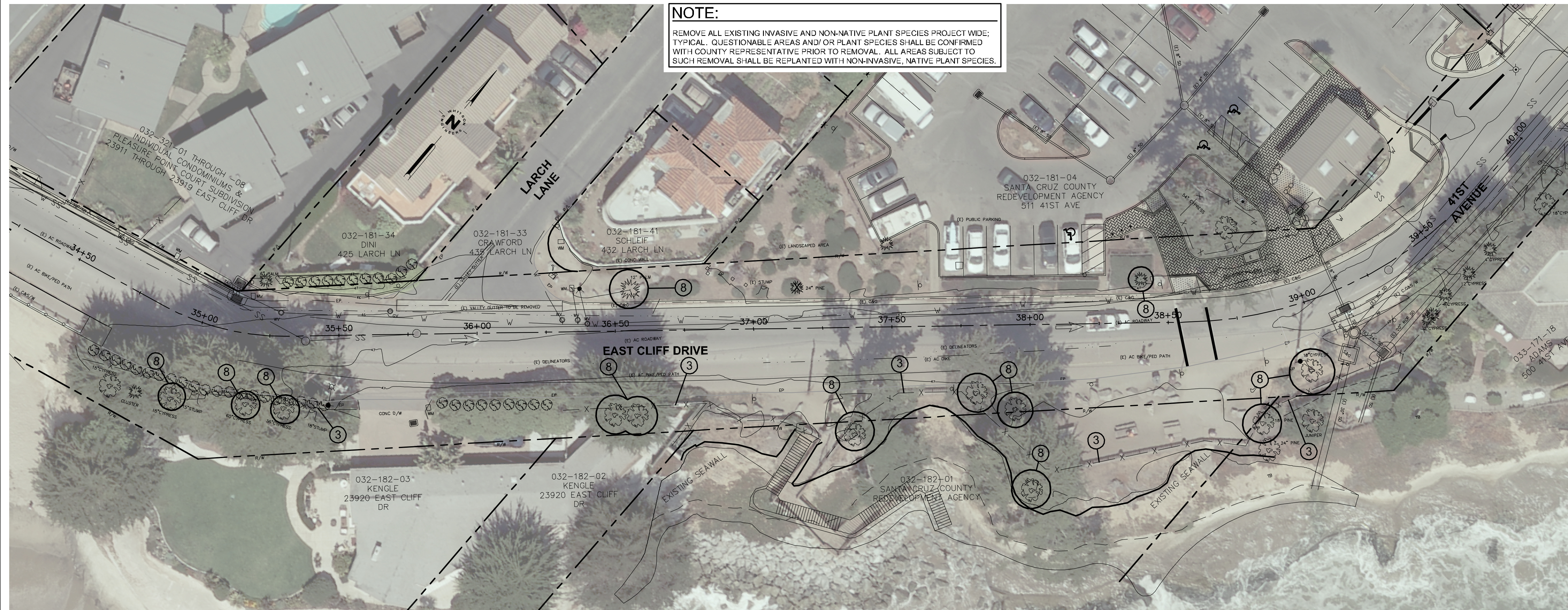
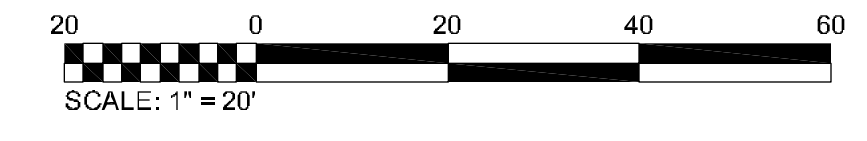


LEGEND

- PROPERTY BOUNDARY/ROW
- ALIGNMENT/TRAVEL WAY CENTERLINE
- EXISTING WATER LINE
- EXISTING SANITARY SEWER PIPE
- EXISTING GAS LINE
- EXISTING OVERHEAD POWER LINE
- EXISTING STORM DRAIN PIPE
- EXISTING FACILITIES TO BE REMOVED OR ABANDONED

KEY NOTES

- 1 REMOVE EXISTING STORM DRAIN STRUCTURES AND ABANDON PIPES. PIPES WHICH ARE TO BE ABANDONED AND DO NOT CONFLICT WITH NEW CONSTRUCTION SHALL BE LEFT IN PLACE. EACH END OF THE ABANDONED PIPE SHALL BE PLUGGED WITH CONCRETE PER 15-2.05a OF THE STANDARD SPECIFICATIONS. OUTFALL PIPE ENDS THROUGH THE NEW WALL DESIGNATED TO BE ABANDONED SHALL BE CAPPED WITH MATERIAL TO MATCH EXISTING COLORED AND TEXTURED CONCRETE WALL. PLUG TO BE PINNED THROUGH PIPE END INTO NEW WALL AS DIRECTED BY ENGINEER.
- 2 SALVAGE FOR RELOCATION AND STORE AS DIRECTED BY COUNTY: EXISTING CONCRETE PLEASURE POINT PARK SIGN, TOTEM POLE, NIGHT FIGHTERS PLAQUE, AND SURFER SCULPTURE. REFER TO LANDSCAPE DRAWINGS FOR NEW PLACEMENT LOCATIONS.
- 3 REMOVE EXISTING FENCE, SALVAGE AND RETAIN FOR OWNER
- 4 REMOVE EXISTING AC DIKE
- 5 REMOVE EXISTING AC PATH OR MISC AC
- 6 REMOVE EXISTING CONCRETE CURB AND GUTTER
- 7 REMOVE EXISTING CONCRETE SIDEWALK
- 8 PROVIDE TREE PROTECTION
- 9 REMOVE TRAFFIC GUARD RAILS - ALL NEW METAL RAILS AND POSTS TO BE DISMANTLED AND DELIVERED TO COUNTY CORPORATION YARD AT BROMMER STREET. CONTRACTOR SHALL DISPOSE OF OLD RAILS AND POSTS.
- 10 REMOVE ALL TEMPORARY AND OLD RAILING AND SPLIT RAIL FENCING - SPLIT RAIL MATERIAL MAY BE REUSED FOR NEW SPLIT RAIL FENCE AS APPROVED BY PROJECT ENGINEER OR COUNTY INSPECTOR.
- 11 RELOCATE EXISTING PALM TREE TO FLORAL PARK AS DIRECTED BY THE COUNTY (3 PALMS - 25-30 FEET TALL).
- 12 REMOVE EXISTING RAILROAD TIES/ CONCRETE EDGING (MINIMIZE LANDSCAPE DISTURBANCE).



NOTE:
 REMOVE ALL EXISTING INVASIVE AND NON-NATIVE PLANT SPECIES PROJECT WIDE. TYPICAL, QUESTIONABLE AREAS AND/OR PLANT SPECIES SHALL BE CONFIRMED WITH COUNTY REPRESENTATIVE PRIOR TO REMOVAL. ALL AREAS SUBJECT TO SUCH REMOVAL SHALL BE REPLANTED WITH NON-INVASIVE, NATIVE PLANT SPECIES.

WHITSON ENGINEERS
 2425 Porter Street - Suite 2 - Soquel, CA 95073
 831 464-9363 - Fax 831 464-2316
 CIVIL ENGINEERING • LAND SURVEYING • PROJECT MANAGEMENT



County of Santa Cruz
 Department of Public Works
 701 Ocean St. Rm 410
 Santa Cruz, CA 95060-4000
 Phone: (831) 454-2180
 Fax: (831) 454-2385

EXISTING CONDITIONS AND DEMOLITION PLAN
 STA 30+00 - STA 40+00
 EAST CLIFF DRIVE PARKWAY PROJECT
 32nd AVENUE TO 41ST AVENUE
 County of Santa Cruz

REV	DATE	DESCRIPTION
1	03/22/10	75% SUBMITTAL
2	10/08/10	95% SUBMITTAL
3	07/12/11	BID SET

DATE: OCTOBER 2010
 SCALE: AS NOTED
 DESIGNED BY: _____
 DRAFTED BY: _____
 CHECKED BY: _____
 JOB NO.: 2280.00
 FILE: Civil P1bn.dwg

C1.2

APR 08, 2011 - 11:30AM
 V:\Whitson\Projects\2280\DWG PLANNING